

TRUE LOCK Distal Tibia Anterolateral Anatomic Plates are indicated for;

- Extra-articular and simple intra-articular distal tibia fractures.
- Distal tibia fracture, percutaneous or reducible by limited arthrotomy.
- Distal tibia fracture extending into the diaphyseal area.

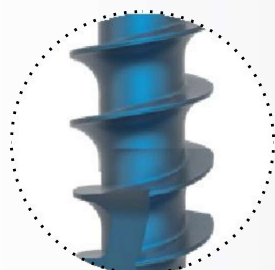
Anatomical plate; right & left .

7 different hole option between 5-15.

TRUE LOCK Distal Tibia Anterolateral Anatomic Plates are made of Ti6Al4V ELI material (ASTM F136).



TRUE LOCK Distal Tibia Anterolateral Anatomic Plate Features

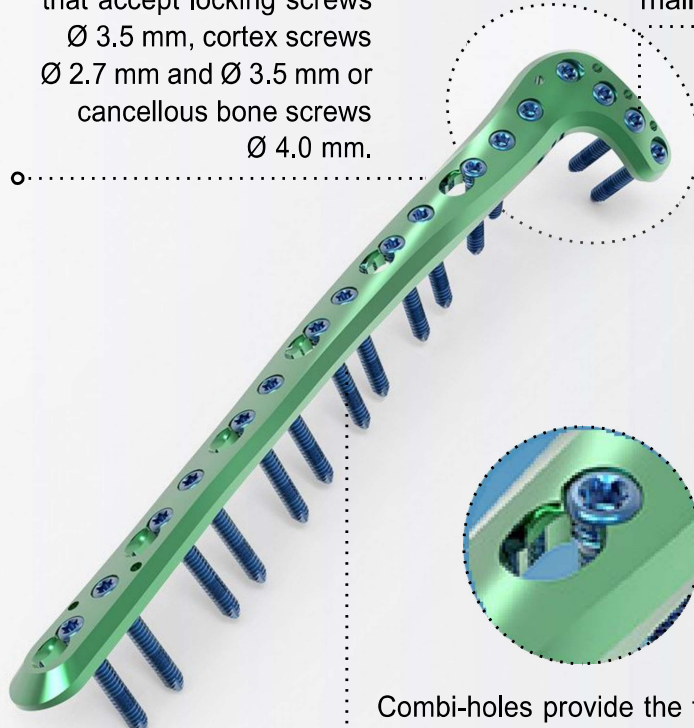


At the cancellous part of the bone near the joint, 4,0 mm cancellous locking screw option supports plate and screw fit well; prevents it from pull out .

The head of the plate features four locking holes that accept locking screws Ø 3.5 mm, cortex screws Ø 2.7 mm and Ø 3.5 mm or cancellous bone screws Ø 4.0 mm.

Four distal head holes angle 7° inferiorly to capture the posterior malleolus.

Kirschner wire holes in the head, parallel to the joint, accept Kirschner wires to temporarily fix fragments and show proximity to the joint.



Combi-holes provide the flexibility of axial compression and locking capability throughout the length of the plate shaft.



TRUE LOCK Distal Tibia Anterolateral Anatomic Plate Screws Info

Reference Number:	Hole Count:	Length (mm)		
(L) 201-11111-005 (R) 201-11112-005	5 hole	100	3.5 mm Non-Locking Cortical Screw	
(L) 201-11111-007 (R) 201-11112-007	7 hole	125	3.5 mm Locking Cortical Screw	
(L) 201-11111-009 (R) 201-11112-009	9 hole	150	4 mm Non-Locking Cancellous Screw	
(L) 201-11111-011 (R) 201-11112-011	11 hole	175	4 mm Locking Cancellous Screw	
(L) 201-11111-013 (R) 201-11112-013	13 hole	200	4 mm Locking Cannulated Cancellous Screw	
(L) 201-11111-015 (R) 201-11112-015	15 hole	225		